



perfect for  
photo album cardboard

"Sweet Christmas"

Item no. 1152 22 01 - 03



URSUS®



# DIY-Template SANTA'S SLEIGH

## Material:

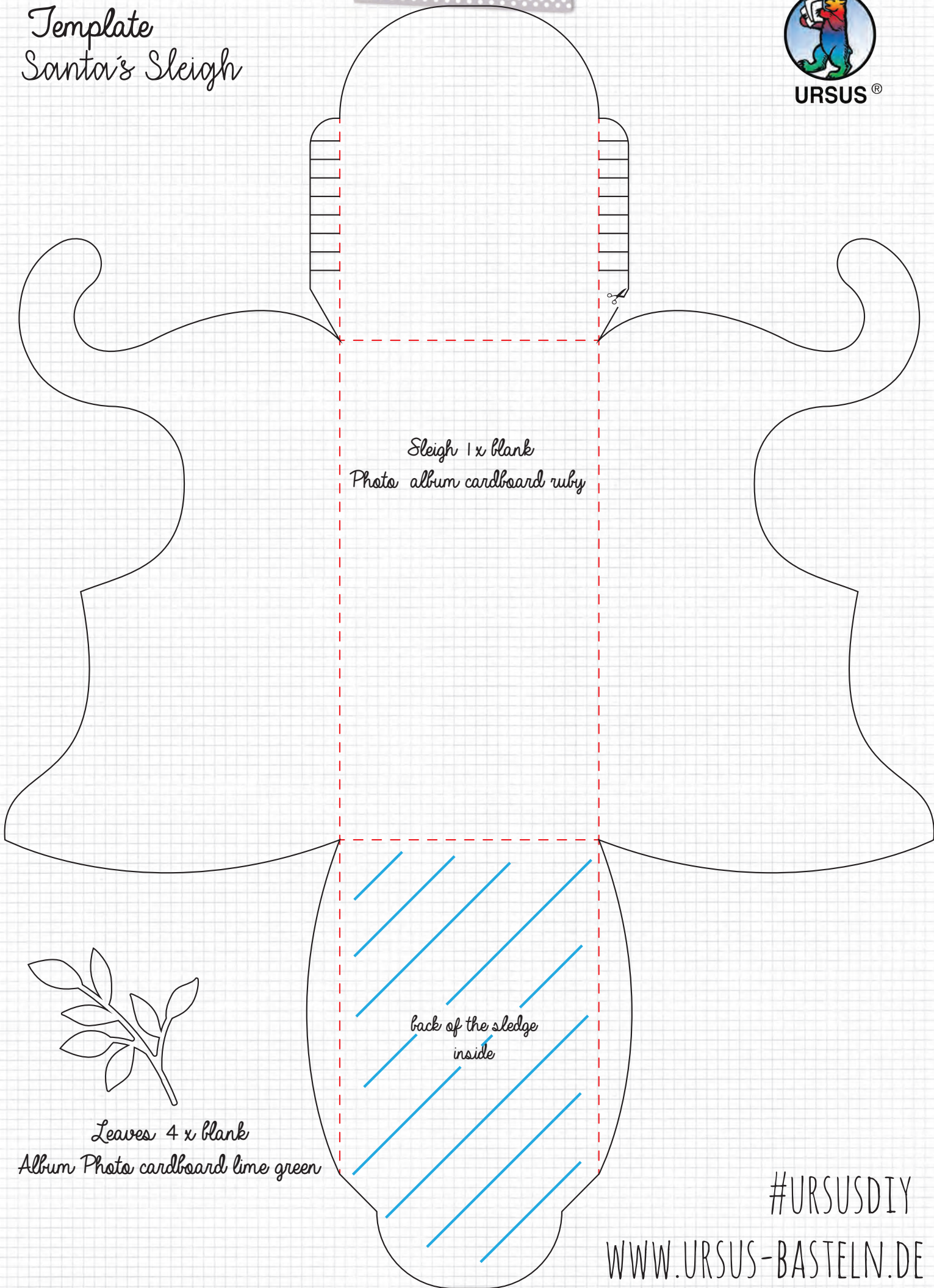
- Item no. 1152 22 03 Photo album cardboard "Sweet Christmas", motif 03
- Item no. 388 22 22 Photo album cardboard 300 g/m<sup>2</sup>, Colour 22 ruby
- Item no. 388 22 53 Photo album cardboard 300 g/m<sup>2</sup>, Colour 53 lime green
- Item no. 6210 46 89 Glitter cardboard, Colour 89 silver
- Item no. 5931 00 126 Creative Sticker, motif 126
- Item no. 5641 00 38 Creative Accessoires "Mini Pack", motif 38 light blue
- Item no. 1947 00 71 Motif Punch "small" snowflake 2
- Item no. 1948 00 71 Motif Punch "medium" snowflake 2
- Item no. 1949 00 71 Motif Punch "big" snowflake 2
- Item no. 5653 00 00 Adhesive pads 2 mm

#URSUSDIY

WWW.URSUS-BASTELN.DE



# Template Santa's Sleigh



Sleigh 1 x blank  
Photo album cardboard ruby

back of the sledge  
inside

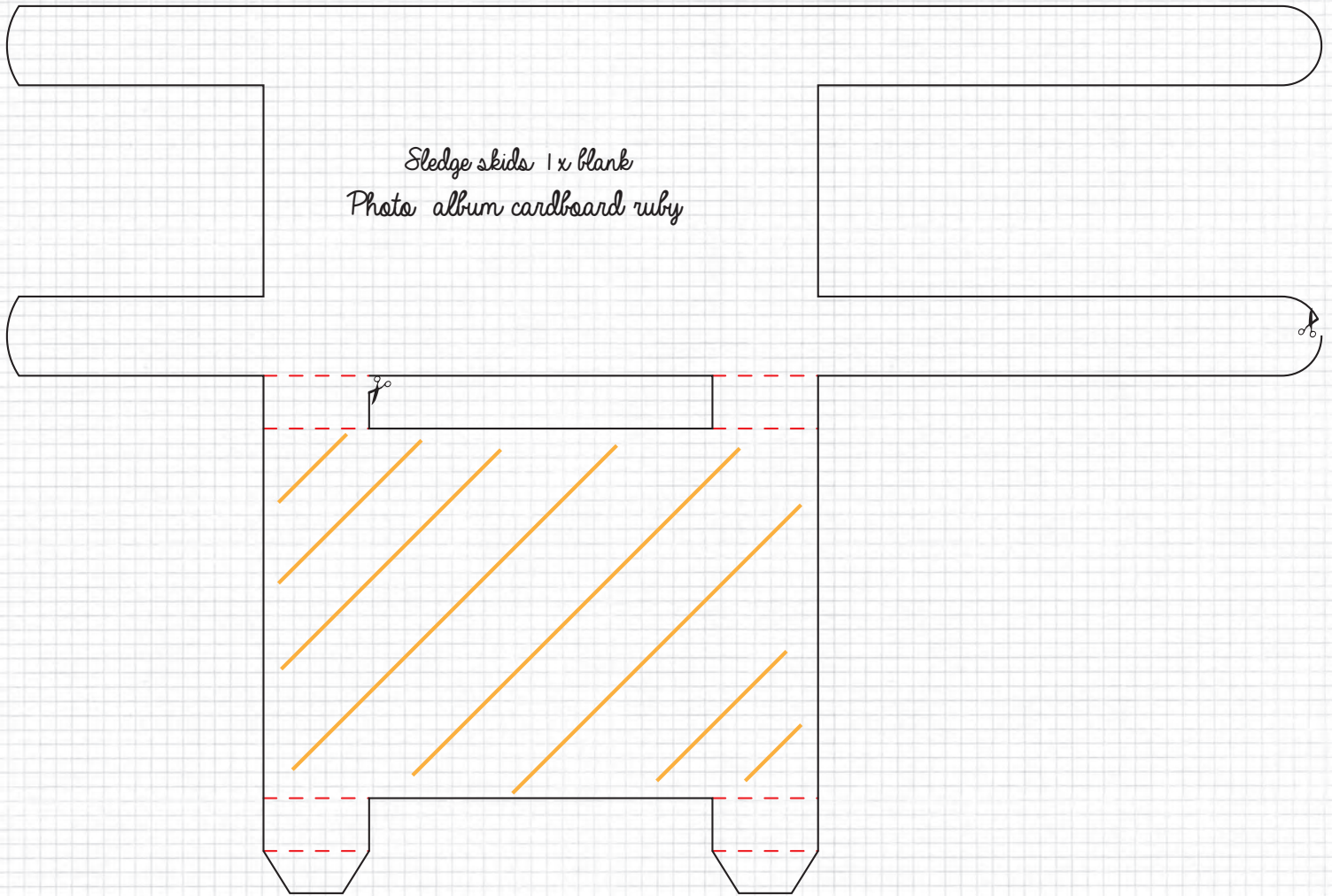
Leaves 4 x blank  
Album Photo cardboard lime green

#URSUSDIY

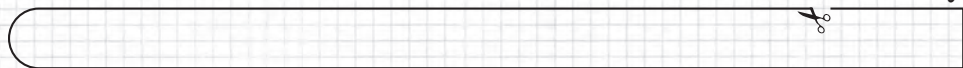
WWW.URSUS-BASTELN.DE



# Template Santa's Sleigh



rear arches (slides) 2 x cut to size Photo album cardboard ruby



— Adhesive surface  
(connection to sleigh)

 Cutting

#URSUSDIY

WWW.URSUS-BASTELN.DE



# Template Santa's Sleigh



## *You also need*

Pencil, ruler, scissors, craft knife, cutting pad, folding bone, liquid glue and hot glue

## *Instruction*

1. Use tracing paper to transfer the originals to the photo boxes provided for this purpose (see original labeling).
2. With the help of the folding bone, the various groove lines are drawn as marked on the template. Then all parts are cut out and folded at the groove lines.
3. Fasten the rear curved cut parts (photoalbum cardboard number 22 ruby) to the back of the carriage (inside) with adhesive and form them with the help of a pin or folding bone.
4. Coat the cut pieces from the photo cardboard "Sweet Christmas" with glue and glue them onto the corresponding parts of the sled (see illustration).
5. Apply glue to the tabs of the carriage and fasten them.
6. Apply glue to the tabs on the runners (photoalbum cardboard number 22 ruby) and fasten. Apply adhesive to the joints of the runners and secure to the bottom of the carriage. Form the front and rear skids into arches using a pin or folding bone.
7. Now it's time to decorate: Punch out several snowflakes from the glitter box silver and the photo box "Sweet Christmas" with the help of the motif holes. Stick them together with the help of adhesive pads. Decorate as desired with the creative accessories. Cut the banner from photoalbum cardboard ruby red or lime green (as you like) and decorate with the writing. Transfer all the individual elements to decorate the sled to the other side of the sled.

More information about URSUS products can be found at:  
[www.ursus-basteln.de](http://www.ursus-basteln.de)



#URSUSDIY

[WWW.URSUS-BASTELN.DE](http://WWW.URSUS-BASTELN.DE)